

2/1/2024

Patrick Snyders
JF Electric
100 Lakefront Pkwy
Edwardsville, IL 62025

**RE: Sikeston alley rebuild
Sikeston, MO**

Dear Patrick:

We are transmitting herewith:

No. of Prints	Drawing Type	Date of Drawing	Description	Prepared by
9	Construction Prints	1/18/23	Construction prints for Sikeston alley rebuild	Ryan Vogt
1	Materials List	1/29/23	Major materials list for design	Ryan Vogt

This is sent for:

- Your Approval
- Construction Documents
- Are Approved
- Corrections-Resubmit

Remarks:

Let me know if you would like to discuss the design on site or in office. I can get the points staked when you are ready. Thank you!

Respectfully submitted,

Ryan Vogt
Electrical Engineer
mobile: +1 3142100513 | office: +1 6187976354
email: ryanvogt@utilitra.com | utilitra.com
200 Lakefront Parkway, Edwardsville, IL 62025



ALLEY REBUILD DESIGN

CITY OF SIKESTON

N KINGSHIGHWAY TO N STODDARD ST

SIKESTON, MO 63801

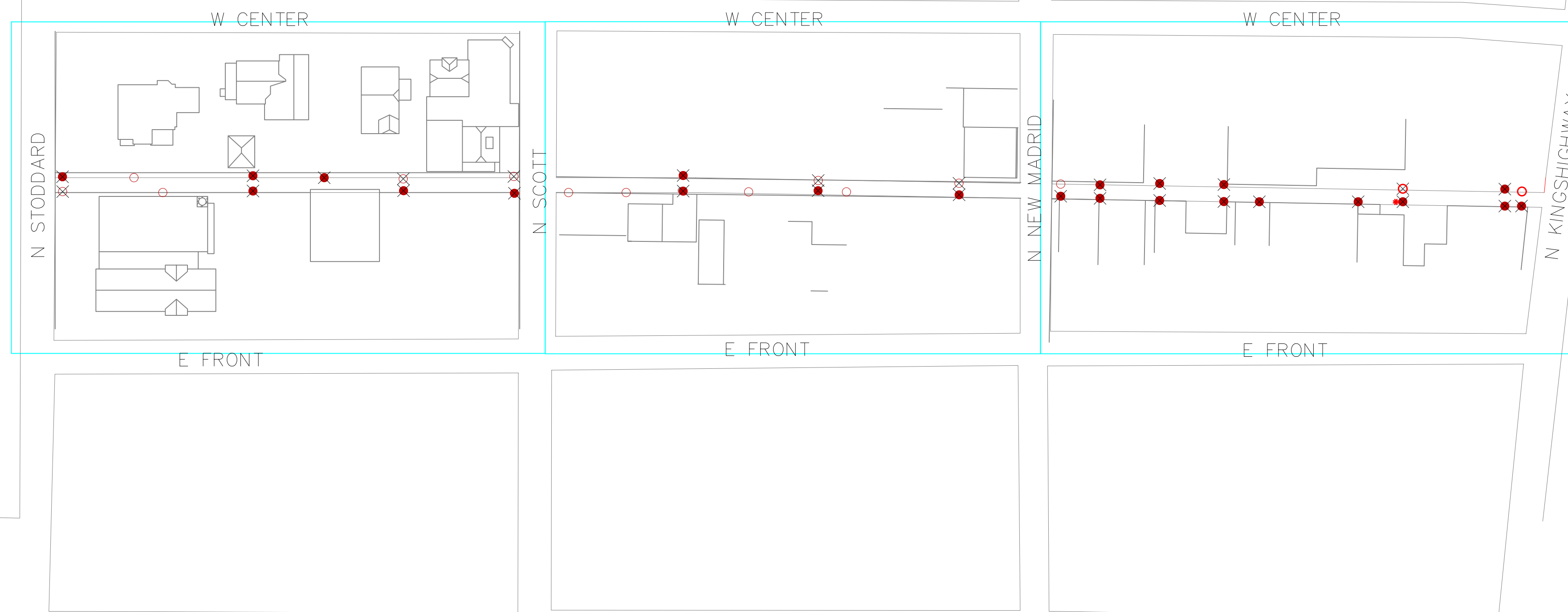
POINT 1: 36.877739°, -89.588135°

POINT 13: 36.876500°, -89.592359°

SHEET E.6

SHEET E.5

SHEET E.4



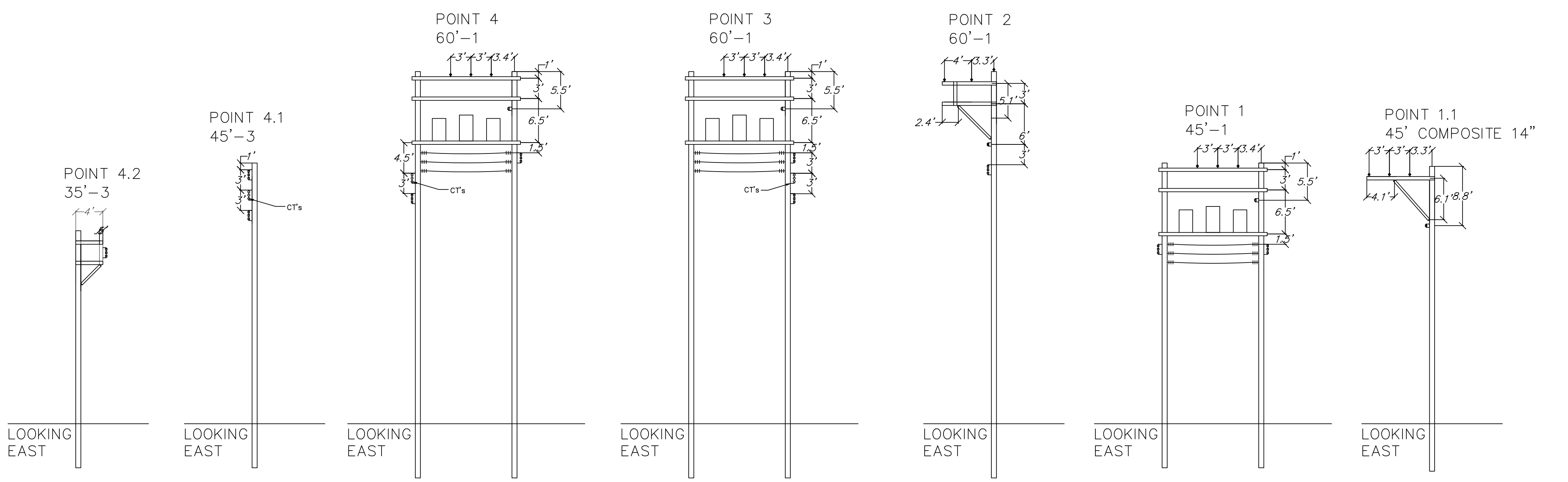
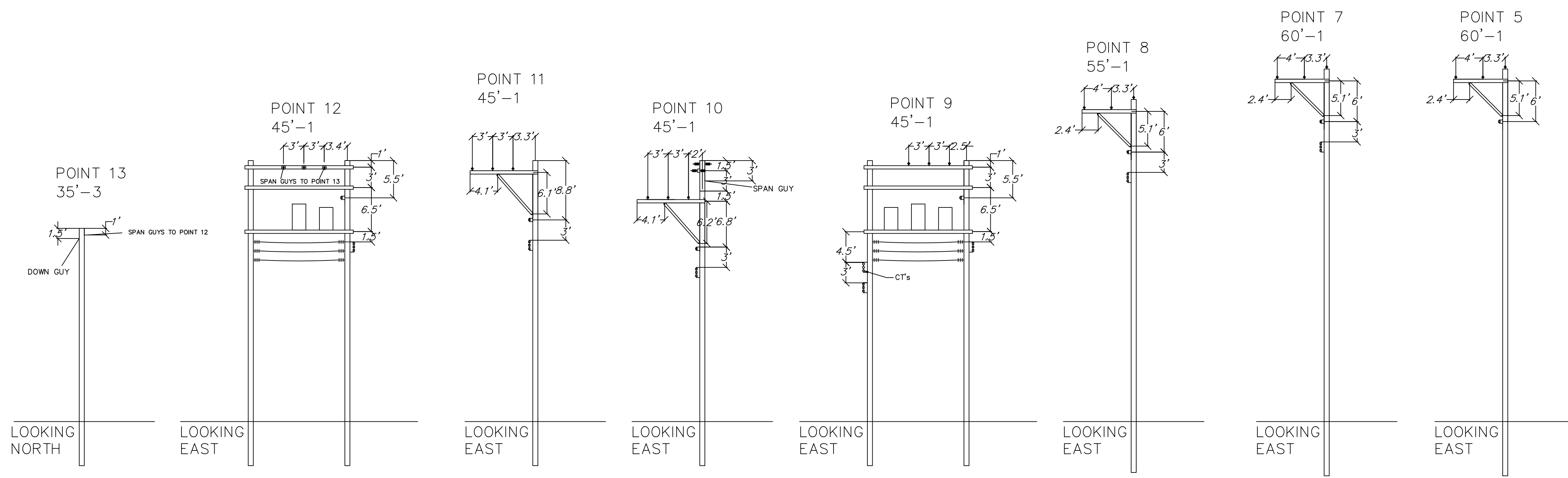
- EXISTING WOOD POLE
- REPLACE WOOD POLE
- ⊗ REMOVE WOOD POLE
- NEW WOOD POLE
- EXISTING OH PRIMARY
- · - · - NEW OH PRIMARY
- NEW UG PRIMARY
- - - EXISTING OH SECONDARY
- ← NEW SPAN GUY
- NEW DOWN GUY
- TRANSFORMER
- * PRIMARY RISER
- * SECONDARY RISER

CONSTRUCTION SET

REVISIONS			
#	DATE	BY	DESCRIPTION



CUSTOMER CITY OF SIKESTON	DESIGNED BY: RV	JOB NO.	
	DRAWN BY: RV	SPEC REF.	
	APPROVED BY: **	SCALE: NA	DRAWING NO. E.1
	DATE: 1/18/24	SHEET # 1 of 9	
PROJ. NAME ALLEY REBUILD			
DRAWING NAME PROJECT SCOPE			



CONDUCTOR TOTALS(+10% FOR CONSTRUCTION)
 336 ACSR 4455'
 1/0 ACSR NEUTRAL 1485'

CONDUCTOR NOTES:
 REMOVE EXISTING PRIMARY CONDUCTORS
 BETWEEN POINTS 1 AND 13
 NEW PRIMARY CONDUCTORS BETWEEN POINTS 1.1
 AND 12 SHALL BE 336 ACSR & 1/0 ACSR
 NEUTRAL

RULING SPANS:
 POINTS 1-12 150FT PRIMARY RULING SPAN

NOTE:
 MAJOR MATERIALS ARE LISTED AND SUBJECT TO
 CHANGE. MINOR MATERIALS AND HARDWARE
 HAVE BEEN EXCLUDED DUE TO DIFFERING
 MANUFACTURER REQUIREMENTS.

CONSTRUCTION NOTES:
 ALL SECONDARY, SERVICE DROPS, METERS TO
 BE TRANSFERRED TO THEIR CORRESPONDING
 POLES. FIELD SHALL VERIFY SECONDARY
 CONDITION AND SIZE. SECONDARY PHASING
 SHALL BE OBSERVED AND MAINTAINED.

ALL JOINT USE POLES TO BE TOPPED ABOVE
 COMMUNICATIONS.

POLES REQUIRING CONCRETE ABUTMENT TO
 HAVE GASKET INSTALLED TO AVOID POINT
 LOADING.

ALL POLES TO BE ROCK BACKFILLED

TRANSFERRED EQUIPMENT TO BE INSPECTED
 PRIOR TO REINSTALLATION

FUSES TO BE SIZED BY FIELD BASED OFF
 EXISTING

METERING AND CONSTRUCTION OUTAGES TO BE
 COORDINATED WITH CITY OF SIKESTON

TRANSFORMERS JUMPERS TO BE COVERED AND
 PROTECTED PER NESC CLEARANCE
 REQUIREMENTS

CONTACT ENGINEER WITH ANY QUESTIONS:
 RYAN VOGT
 314-210-0513
 RYANVOGT@UTILITRA.COM

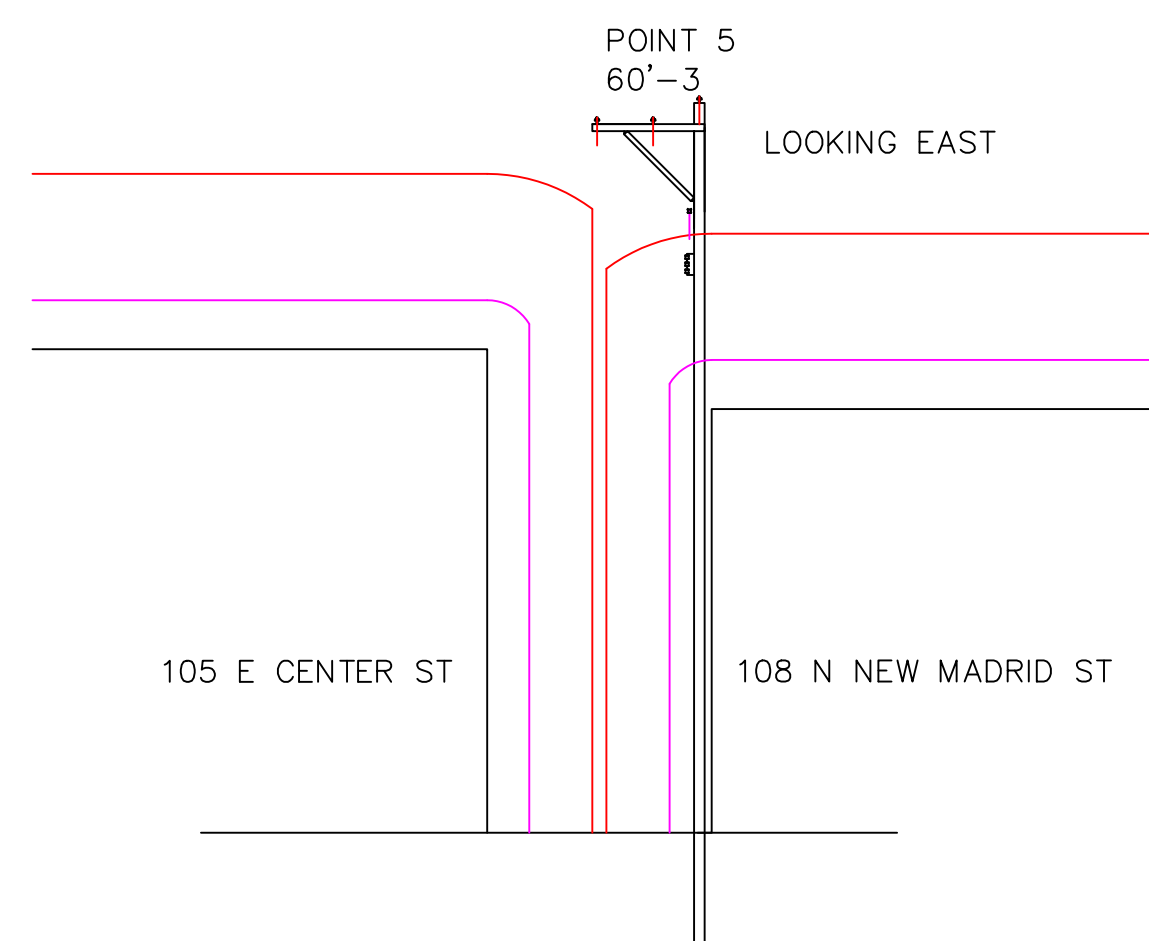
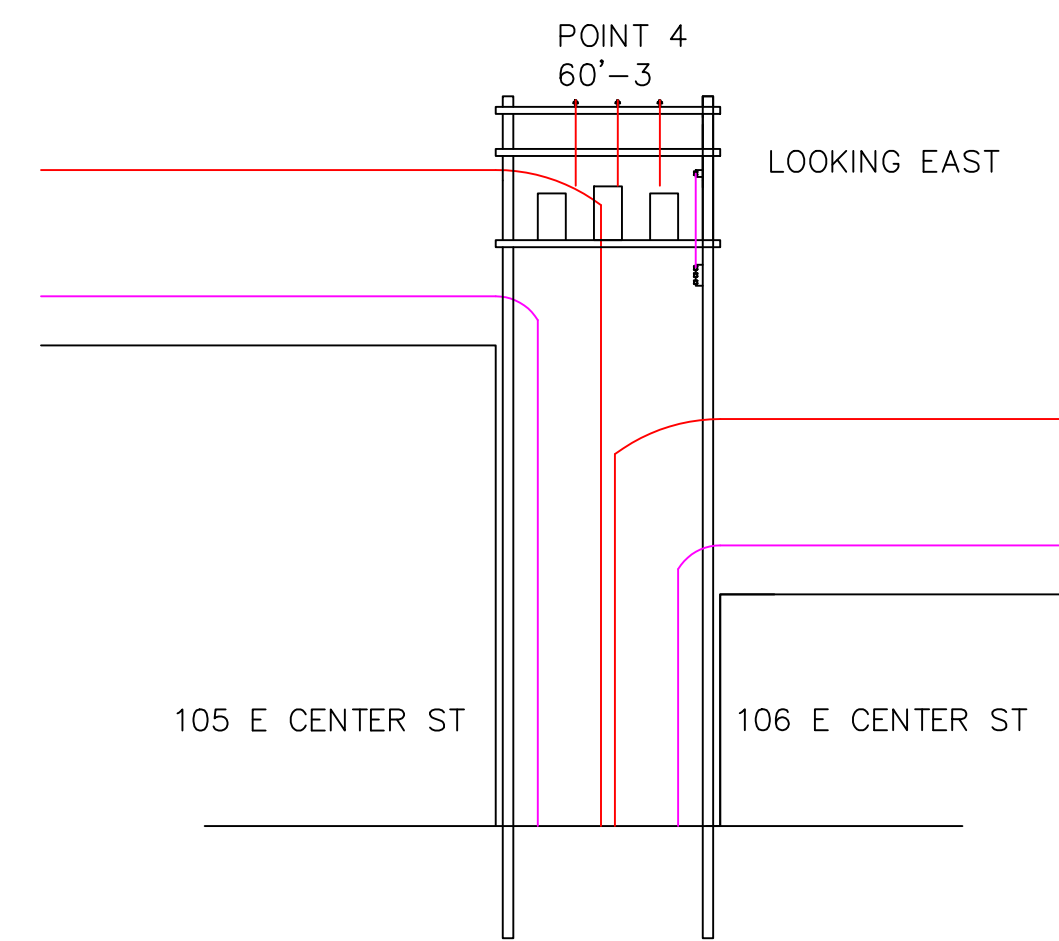
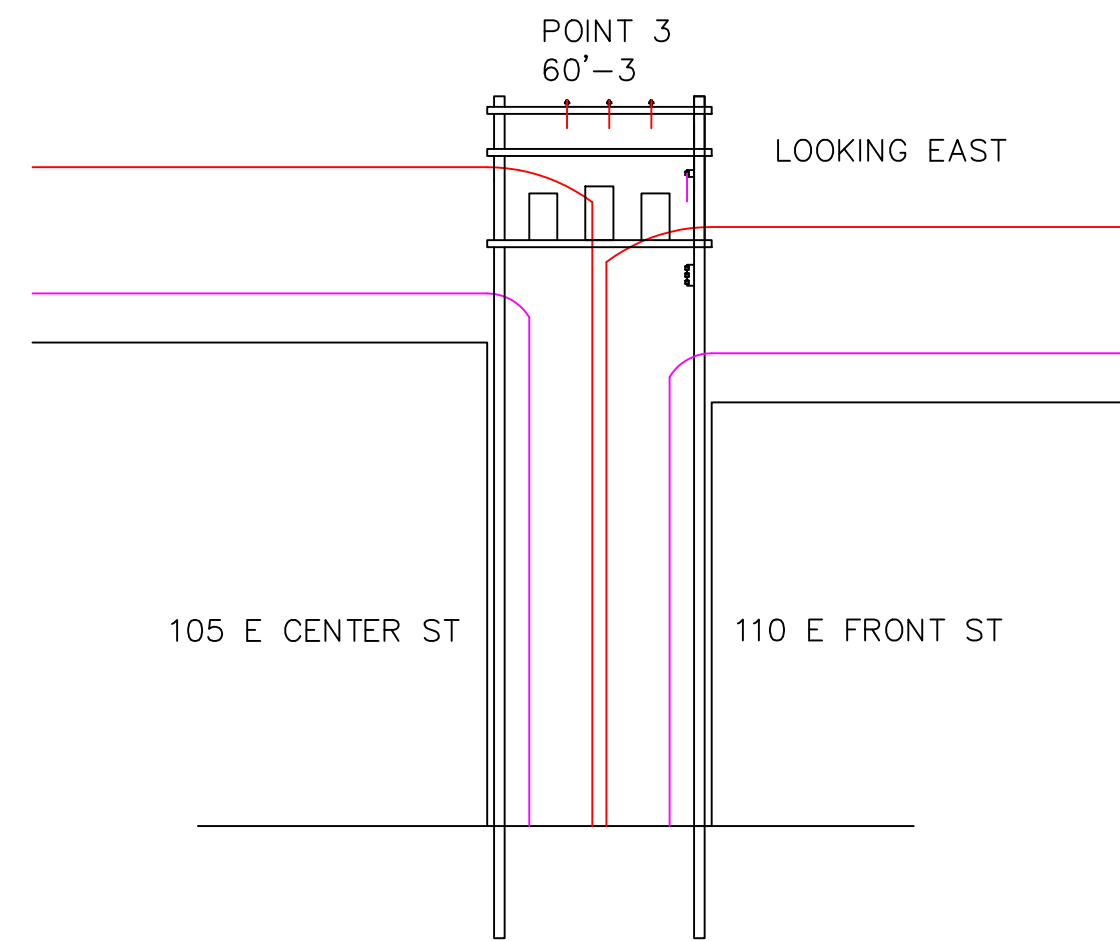
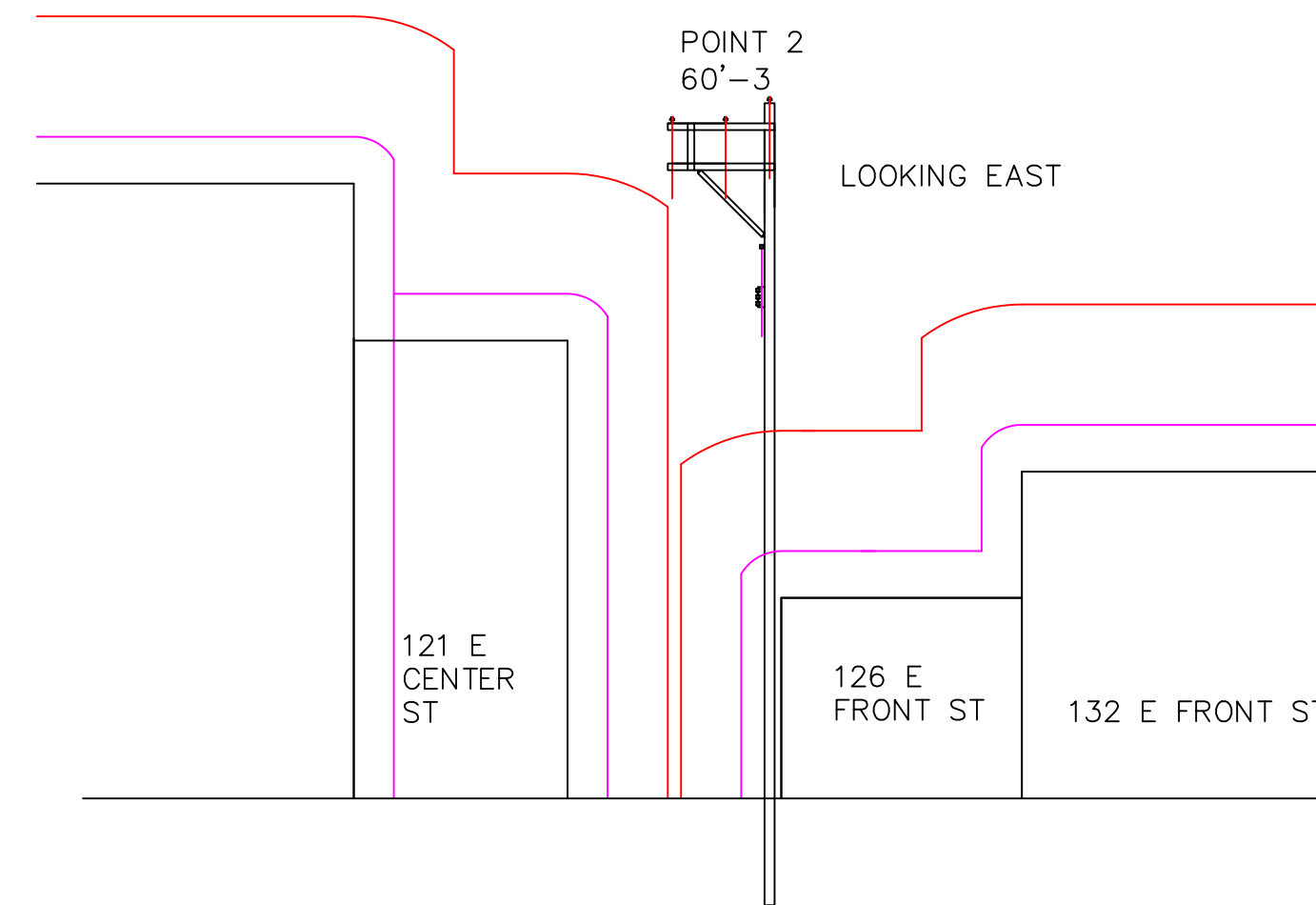
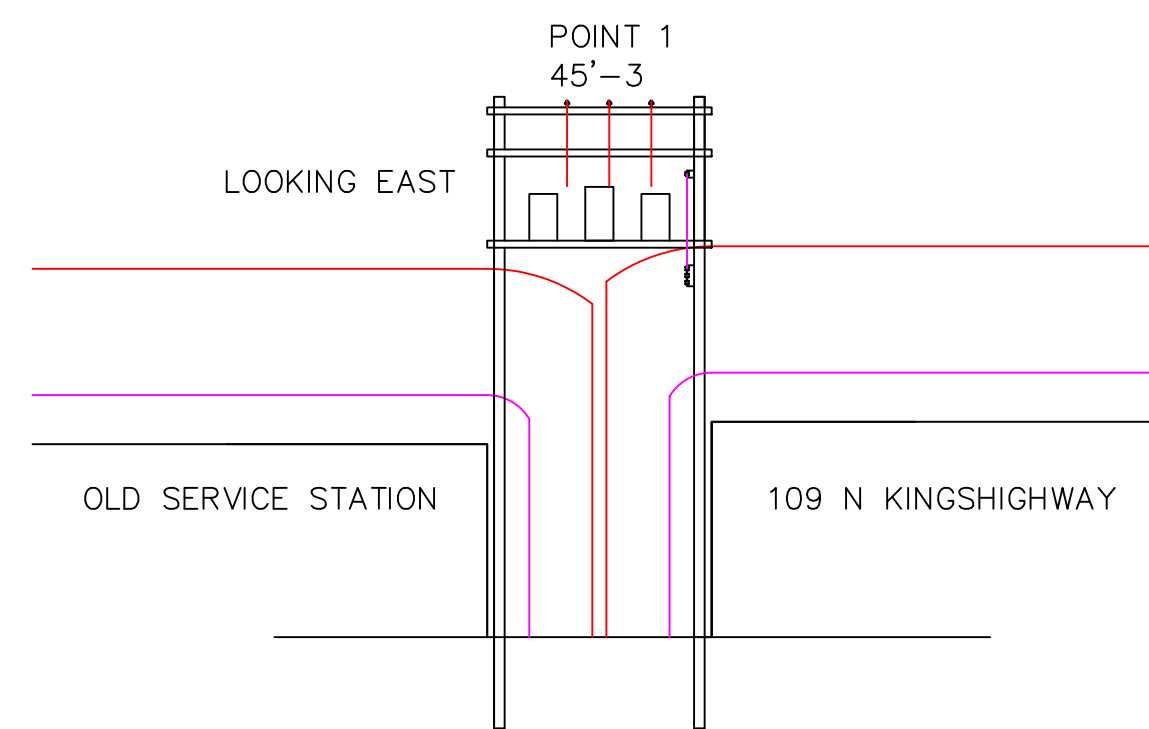
CONSTRUCTION SET

REVISIONS			
#	DATE	BY	DESCRIPTION



CUSTOMER CITY OF SIKESTON
PROJ. NAME ALLEY REBUILD
DRAWING NAME POLE PROFILES

DESIGNED BY: RV	JOB NO.
DRAWN BY: RV	SPEC REF.
APPROVED BY: **	SCALE: NA
DATE: 1/18/24	SHEET # 2 OF 9
DRAWING NO. E.2	



PRIMARY
CONDUCTOR
CLEARANCE



SECONDARY AND
NEUTRAL
CLEARANCE



CONSTRUCTION SET

REVISIONS			
#	DATE	BY	DESCRIPTION



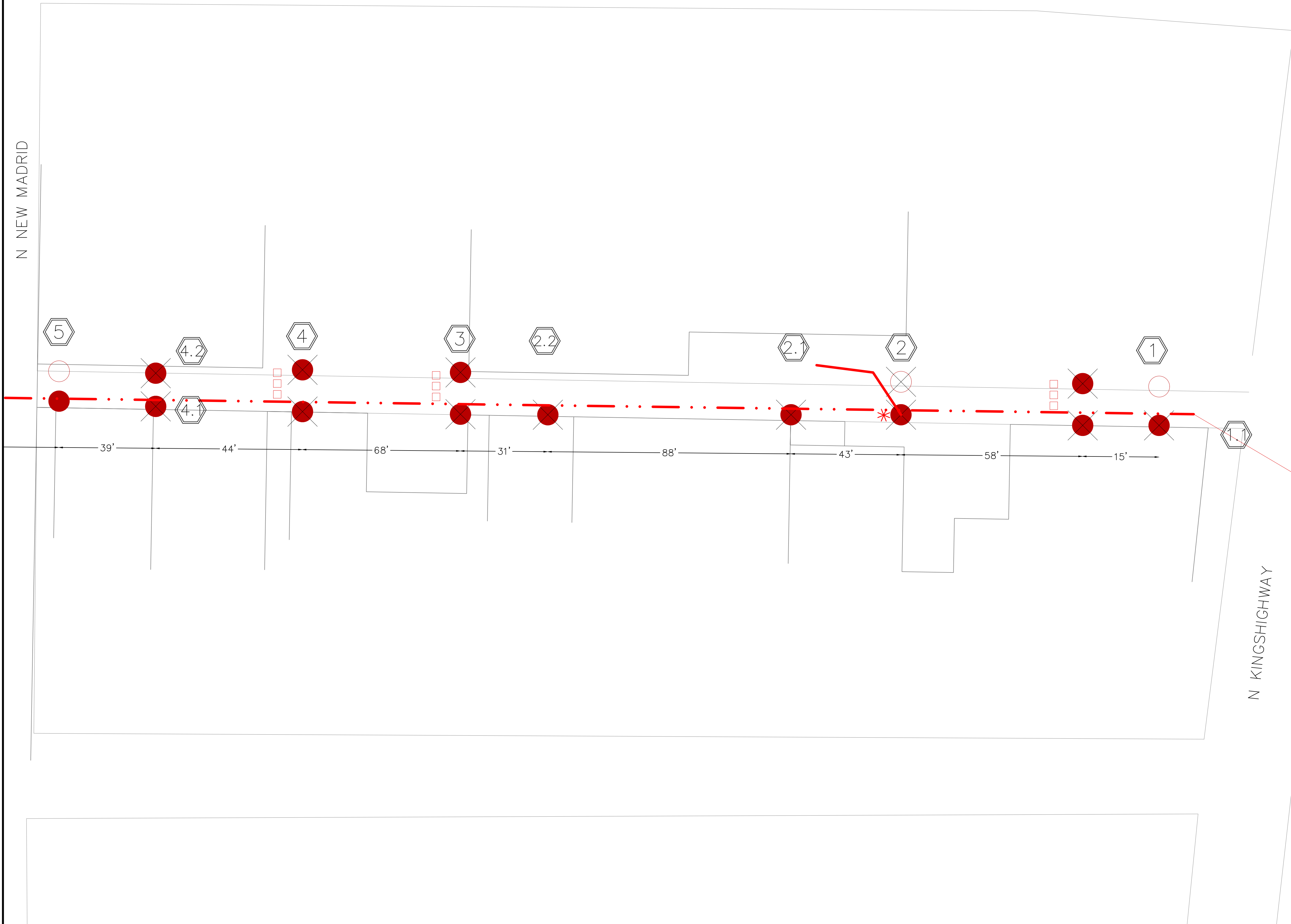
CUSTOMER	CITY OF SIKESTON
PROJ. NAME	ALLEY REBUILD
DRAWING NAME	POLE CLEARANCES

DESIGNED BY:	RV	JOB NO.	
DRAWN BY:	RV	SPEC REF.	
APPROVED BY:	**	SCALE:	NA
DATE:	1/18/24	SHEET #	3 of 9

DRAWING NO.	E.3
-------------	-----

N NEW MADRID

N KINGSHIGHWAY



- 5** POINT 5
POLE # _____
INSTALL:
 -(1) 60'-1 SYP
 -(1) POLE TOP PIN INSULATOR
 -(1) 8' F.G. ALLEY ARM
 -(2) CROSSARM PIN INSULATOR
 -(1) AVIAN COVER CENTER PHASE
 -(1) NEUTRAL CLEVIS
- 4.2** POINT 4.2
POLE # _____
INSTALL:
 -(1) 35'-3 SYP
 -(2) 4' CROSSARM
 -(1) ALLEY ARM BRACE
 -(1) SECONDARY RACK
 -(1) SECONDARY CLEVIS
- 4.1** POINT 4.1
POLE # _____
REMOVE:
 -(2) 45'-3 POLE
 -(1) 16' WOOD CROSSARM
 -(6) POLE TOP PIN
 -(2) NEUTRAL THRU ATTACHMENT
 -(2) SECONDARY RACK
 -(1) 36" STREETLIGHT BRACKET

INSTALL:
 -(1) 45'-3 SYP
 -(2) SECONDARY RACK
 -(1) 100W EQ LED LIGHT FIXTURE
- 4** POINT 4
POLE # _____
REMOVE:
 -(2) 45'-3 POLE
 -(2) 16' WOOD CROSSARM
 -(6) CROSSARM PIN
 -(1) NEUTRAL ATTACHMENT
 -(3) FUSED CUTOUT
 -(6) SECONDARY DEADEND
 -(1) 36" STREETLIGHT BRACKET

TRANSFER:
 -(3) 167 kVA XFMR
 -(2) 16' STEEL XFMR PLATFORM

INSTALL:
 -(2) 60'-1 SYP
 -(2) 16' F.G. CROSSARM
 -(3) CROSSARM PIN INSULATOR
 -(1) AVIAN COVER CENTER PHASE
 -(3) FUSED CUTOUT
 -(1) NEUTRAL THRU CLEVIS
 -(6) SECONDARY DEADEND
 -(2) SECONDARY RACK WITH EXTENSION
 -(1) 100W EQ LED LIGHT FIXTURE
 -(1) #2 CU. POLE GROUND WIRE
- 3** POINT 3
POLE # _____
REMOVE:
 -(2) 45'-3 POLES
 -(2) 16' WOOD CROSSARM
 -(7) CROSSARM PIN
 -(1) NEUTRAL THRU ATTACHMENT
 -(7) SECONDARY DEADEND
 -(3) FUSED CUTOUT
 -(2) SECONDARY RACK
 -(1) HPS LIGHT FIXTURE

TRANSFER:
 -(3) XFMR
 -(2) 16' STEEL XFMR PLATFORM

INSTALL:
 -(2) 60'-1 SYP
 -(2) 16' F.G. CROSSARM
 -(3) CROSSARM PIN INSULATOR
 -(1) AVIAN COVER CENTER PHASE
 -(3) FUSED CUTOUT
 -(1) NEUTRAL THRU CLEVIS
 -(6) SECONDARY DEADEND
 -(2) SECONDARY RACK
 -(1) #2 CU. POLE GROUND WIRE
- 2.2** POINT 2.2
POLE # _____
REMOVE:
 -(1) 30'-3
 -(1) SECONDARY RACK

INSTALL:
 -(1) 35'-3 SYP
 -(1) SECONDARY RACK
- 2.1** POINT 2.1
POLE # _____
REMOVE:
 -(1) 30'-3
 -(2) SECONDARY CLEVIS
 -(1) HPS LIGHT FIXTURE

INSTALL:
 -(1) 35'-3 SYP
 -(1) SECONDARY RACK
 -(1) 100W EQ LED LIGHT FIXTURE
- 2** POINT 2
POLE # _____
REMOVE:
 -(2) 45'-3 POLE
 -(2) 16' WOOD CROSSARM
 -(6) CROSSARM PIN
 -(1) CROSSARM NEUTRAL ATTACHMENT
 -(3) FUSED CUTOUT
 -(1) NEUTRAL CLEVIS
 -(1) PRIMARY RISER

INSTALL:
 -(1) 60'-1 SYP
 -(1) POLE TOP PIN INSULATOR
 -(2) 8' F.G. ALLEY ARM
 -(2) CROSSARM PIN INSULATOR
 -(1) AVIAN COVER CENTER PHASE
 -(1) NEUTRAL CLEVIS
 -(1) SECONDARY RACK
 -(1) PRIMARY RISER
 -NEW #2,AL,CNR,P IN CONDUIT
 -(3) FUSED CUTOUT
 -(1) #2 CU. POLE GROUND WIRE
- 1** POINT 1
POLE # _____
REMOVE:
 -(2) 45'-3 POLE
 -(3) 16' WOOD CROSSARM
 -(9) DEADEND INSULATOR
 -(6) CROSSARM PIN
 -(2) NEUTRAL DEADEND ATTACHMENT
 -(2) DOWN GUY ATTACHMENT
 -(3) FUSED CUTOUTS
 -(2) OPEN WIRE SECONDARY BUSSING
 -(1) SECONDARY RACK
 -(6) SECONDARY DEADEND

TRANSFER:
 -(3) XFMR
 -(2) 16' STEEL XFMR PLATFORM

INSTALL:
 -(2) 45'-1 SYP
 -(2) 16' F.G. CROSSARM
 -(6) DEADEND INSULATOR
 -(3) CROSSARM PIN INSULATOR
 -(3) FUSED CUTOUT
 -(1) NEUTRAL THRU CLEVIS
 -(6) SECONDARY DEADEND
 -(1) SECONDARY RACK
 -(1) #2 CU. POLE GROUND WIRE
- 1.1** POINT 1.1
POLE # _____
REMOVE:
 -(1) 35'-3 POLE
 -(2) SECONDARY RACK

INSTALL:
 -(1) 45'-COMPOSITE 14" RAKE 10" NORTH
 -(1) 10' F.G. ALLEY ARM
 -(3) CROSSARM PIN INSULATOR
 -(1) AVIAN COVER CENTER PHASE
 -(2) NEUTRAL DEADEND
 -(1) SECONDARY RACK

CONSTRUCTION SET

REVISIONS			
#	DATE	BY	DESCRIPTION



CUSTOMER
CITY OF SKESTON

PROJ. NAME
ALLEY REBUILD

DRAWING NAME
LINE DESIGN

DESIGNED BY: RV
DRAWN BY: RV
APPROVED BY: **
DATE: 1/18/24

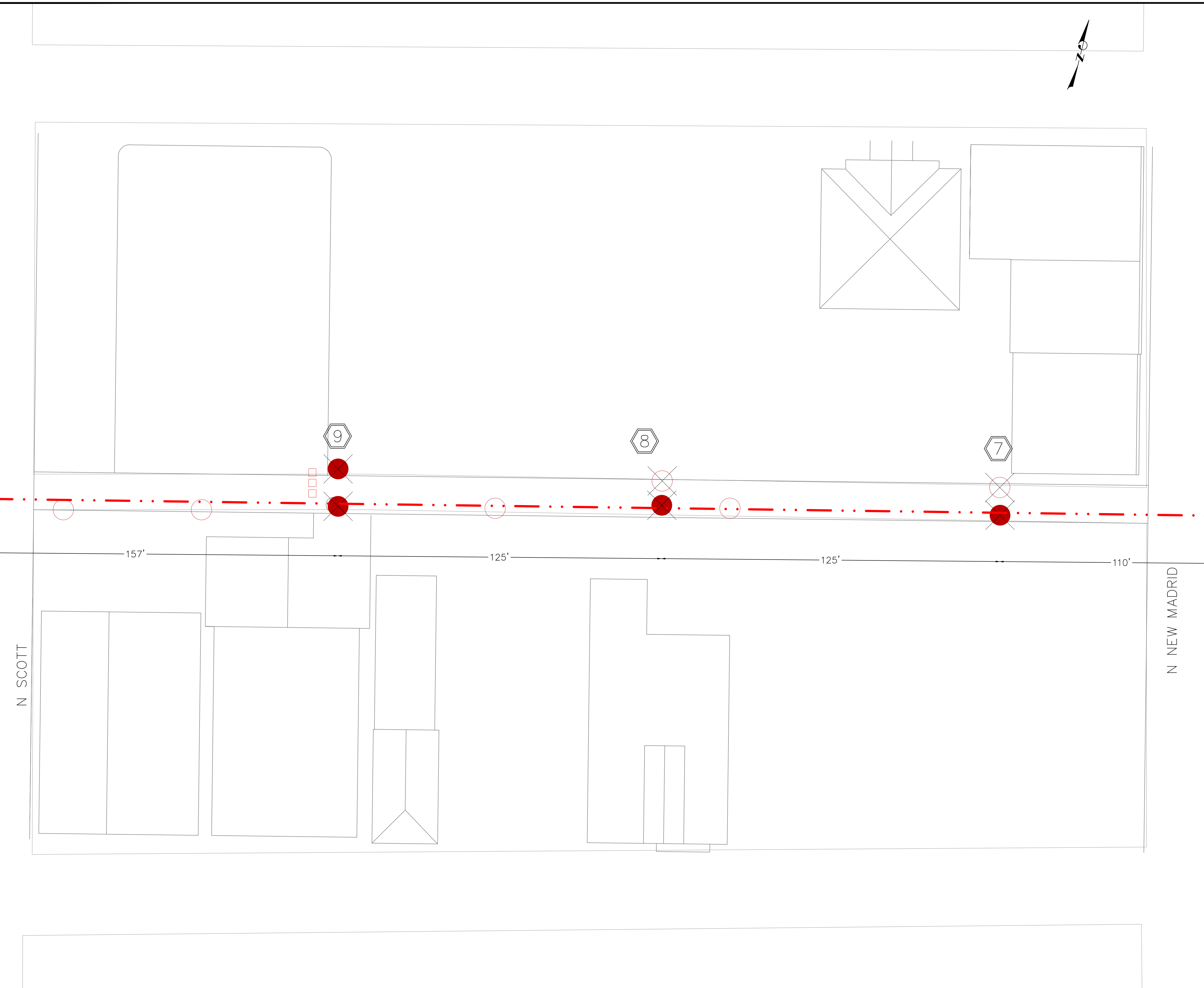
JOB NO.
SPEC REF.
SCALE: NA
SHEET # 4 OF 9
DRAWING NO. E.4



- 9**
POINT 9
POLE # _____
REMOVE:
-(2) 45'-3 POLE
-(2) 16' WOOD CROSSARM
-(6) CROSSARM PIN
-(3) FUSED CUTOUT
-(2) NEUTRAL THRU ATTACHMENT
-(1) HPS LIGHT FIXTURE
-(6) SECONDARY DEAD END
-(2) SECONDARY RACK
- TRANSFER:
-(3) XFMR
-(2) 16' STEEL XFMR PLATFORM
- INSTALL:
-(2) 45'-1 SYP
-(2) 16' F.G. CROSSARM
-(3) CROSSARM PIN INSULATOR
-(1) AVIAN COVER CENTER PHASE
-(3) FUSED CUTOUT
-(1) NEUTRAL THRU CLEVIS
-(6) SECONDARY DEADEND
-(2) SECONDARY RACK
-(1) #2 CU. POLE GROUND WIRE
-(1) 100W EQ LED LIGHT FIXTURE

- 8**
POINT 8
POLE # _____
REMOVE:
-(2) 45'-3 POLE
-(1) 16' WOOD CROSSARM
-(6) CROSSARM PIN
-(2) NEUTRAL THRU ATTACHMENT
- INSTALL:
-(1) 55'-1 SYP
-(1) POLE TOP PIN
-(1) 8' F.G. ALLEY ARM
-(2) CROSSARM PIN INSULATOR
-(1) AVIAN COVER CENTER PHASE
-(1) SECONDARY RACK

- 7**
POINT 7
POLE # _____
REMOVE:
-(2) 45'-3 POLE
-(1) 16' WOOD CROSSARM
-(6) CROSSARM PIN
-(2) NEUTRAL THRU ATTACHMENT
-(2) SECONDARY CLEVIS
-(1) 36" STREETLIGHT BRACKET
- INSTALL:
-(1) 60'-1 SYP
-(1) POLE TOP PIN
-(1) 8' F.G. ALLEY ARM
-(2) CROSSARM PIN INSULATOR
-(1) AVIAN COVER CENTER PHASE
-(2) SECONDARY CLEVIS
-(1) #2 CU. POLE GROUND WIRE
-(1) 100W EQ LED LIGHT FIXTURE

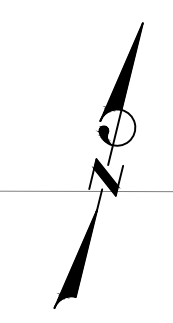


CONSTRUCTION SET

REVISIONS			
#	DATE	BY	DESCRIPTION

UTILITRA
200 LAKEFRONT PKWY
EDWARDSVILLE, ILLINOIS
1-618-797-9001

CUSTOMER CITY OF SIKESTON	DESIGNED BY: RV	JOB NO.
PROJ. NAME ALLEY REBUILD	DRAWN BY: RV	SPEC REF.
DRAWING NAME LINE DESIGN	APPROVED BY: **	SCALE: NA
	DATE: 1/18/24	DRAWING NO. E.5
	SHEET # 5 of 9	



- 13** POINT 13
POLE # _____
REMOVE:
-(3) DEADEND INSULATOR
-(1) DEADEND NEUTRAL ATTACHMENT

INSTALL :
-(1) 35'-3 SYP STUB POLE
-(1) SECONDARY CLEVIS
-(2) 3/8" SPAN GUY TO POLE 12
-(1) 3/8" DOWNGUY LL=20'
-(1) 10" ANCHOR
- 12** POINT 12
REMOVE:
-(2) 45'-3 POLE
-(2) 16' WOOD CROSSARM
-(4) CROSSARM PIN
-(2) FUSED CUTOUT
-(6) SECONDARY DEADEND
-(2) SECONDARY RACK

TRANSFER:
-(2) XFMR
-(1) 16' STEEL XFMR PLATFORM

INSTALL:
-(2) 45'-1 SYP
-(2) 16' F.G. CROSSARM
-(3) DEADEND INSULATOR
-(2) 3/8" SPAN GUY TO POLE 13
-(2) FUSED CUTOUT
-(6) SECONDARY DEADEND
-(2) SECONDARY RACK
-(1) #2 CU. POLE GROUND WIRE
- 11** POINT 11
POLE # _____
REMOVE:
-(1) 35'-3 POLE
-(1) HPS LIGHT FIXTURE

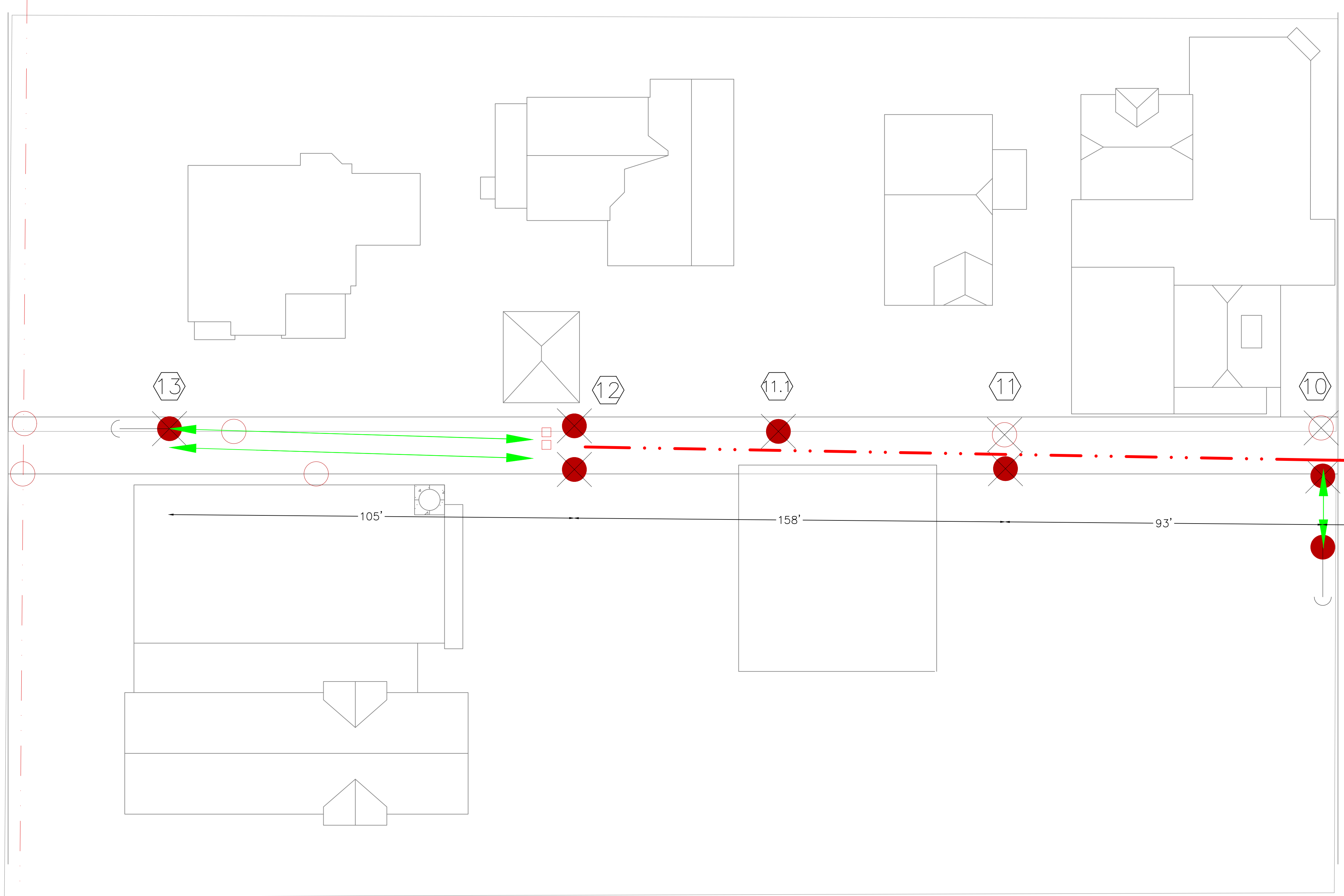
INSTALL:
-(1) 35'-3 SYP
-(1) SECONDARY RACK
-(1) 100W EQ LED LIGHT FIXTURE
- 11** POINT 11
POLE # _____
REMOVE:
-(2) 45'-3 POLE
-(2) 16' WOOD CROSSARM
-(3) CROSSARM PIN
-(1) NEUTRAL THRU ATTACHMENT
-(2) SECONDARY THRU ATTACHMENT
-(2) 16' STEEL XFMR PLATFORM
-(3) SPAN GUY ATTACHMENT
-(2) DOWN GUY ATTACHMENT
-(1) 36" STREETLIGHT BRACKET

INSTALL:
-(1) 45'-1 SYP
-(1) 10' F.G. ALLEY ARM
-(3) CROSSARM PIN INSULATOR
-(1) AVIAN COVER CENTER PHASE
-(1) SECONDARY RACK
- 10** POINT 10
POLE # _____
REMOVE:
-(2) 45'-3 POLE
-(4) 8' DEADEND WOOD
-(20) CROSSARM INSULATOR
-(15) DEADEND INSULATOR
-(2) SPAN GUY
-(2) DOWN GUY
-(2) 16' DEADEND WOOD CROSSARM
-(1) NEUTRAL T-CORNER
-(1) NEUTRAL THRU ATTACHMENT

INSTALL:
-(1) 45'-1 SYP
-(1) 8' F.G. CROSSARM
-(6) DEADEND INSULATOR
-(1) SPAN GUY TO SOUTH
-(3) NEUTRAL DEADEND INSULATOR
-(1) 10' F.G. ALLEY ARM
-(6) CROSSARM PIN INSULATOR
-(2) AVIAN COVER INSIDE PHASES
-(1) SECONDARY RACK

-(1) 30'-3 SYP STUB POLE LL=22'
-(1) 3/8" SPAN GUY TO POLE 10
-(1) 3/8" DOWNGUY LL=9'
-(1) 10" ANCHOR

CONSTRUCTION NOTE:
PHASES TO BE TAPPED AT THIS LOCATION



N STODDARD

N SCOTT

CONSTRUCTION SET

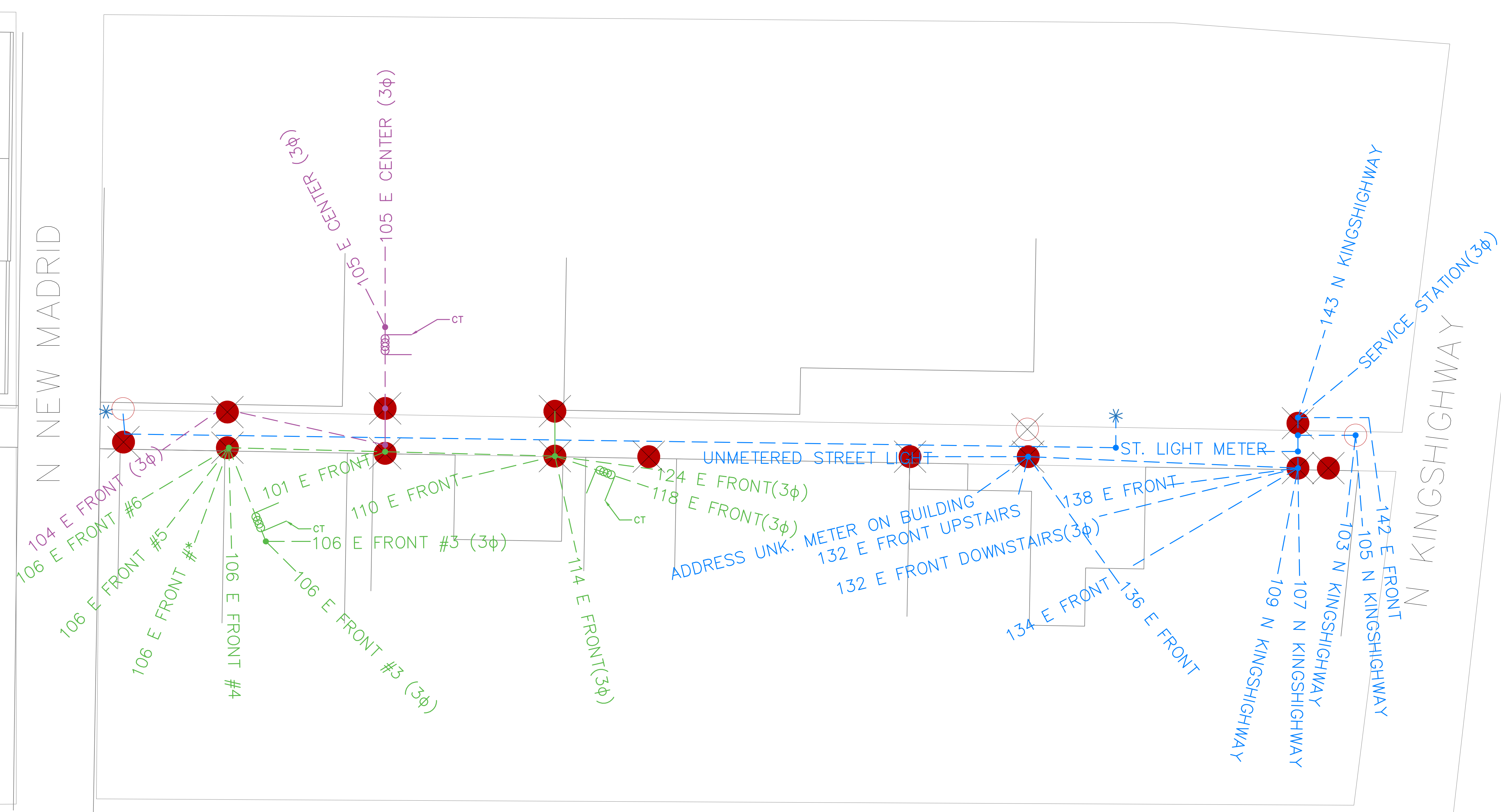
REVISIONS			
#	DATE	BY	DESCRIPTION



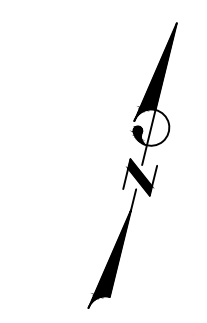
CUSTOMER CITY OF SKESTON	DESIGNED BY: RV	JOB NO.
PROJ. NAME ALLEY REBUILD	DRAWN BY: RV	SPEC REF.
DRAWING NAME LINE DESIGN	APPROVED BY: **	SCALE: NA
	DATE: 1/18/24	DRAWING NO. E.6
		SHEET # 6 of 9

N NEW MADRID

W CENTER



E FRONT



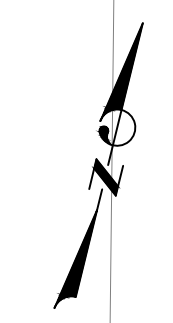
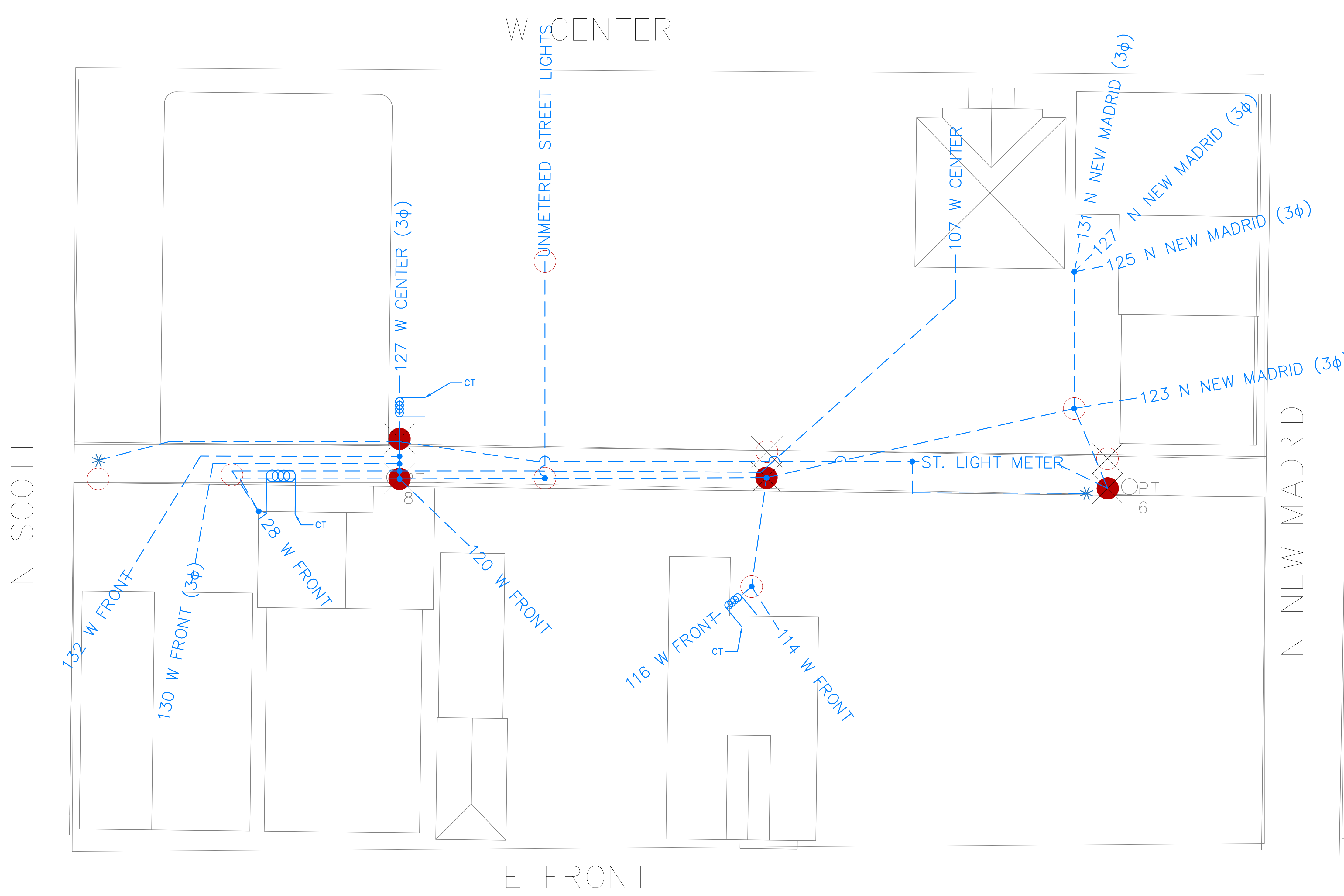
NOTE:
 SECONDARY COLORS CODED TO CORRESPOND TO THEIR RESPECTIVE TRANSFORMERS.
 SECONDARY AND SERVICE DROP CONDUCTORS SHALL BE FIELD VERIFIED FOR CONDITION. IF CONSTRUCTIBILITY OR CONDITION REQUIRES REPLACEMENT, CONDUCTOR SIZES SHALL BE VERIFIED AND MAINTAINED.

CONSTRUCTION SET

REVISIONS			
#	DATE	BY	DESCRIPTION

UTILITRA
 200 LAKEFRONT PKWY
 EDWARDSVILLE, ILLINOIS
 1-618-797-9001

CUSTOMER CITY OF SIKESTON	DESIGNED BY: RV	JOB NO.
PROJ. NAME ALLEY REBUILD	DRAWN BY: RV	SPEC REF.
DRAWING NAME SECONDARY ONE LINE	APPROVED BY: **	SCALE: NA
	DATE: 1/18/24	DRAWING NO. E.7
		SHEET # 7 of 9



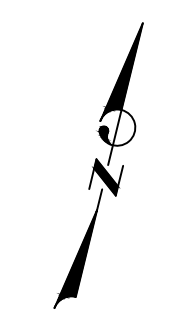
NOTE:
 SECONDARY COLORS CODED TO CORRESPOND
 TO THEIR RESPECTIVE TRANSFORMERS.
 SECONDARY AND SERVICE DROP CONDUCTORS
 SHALL BE FIELD VERIFIED FOR CONDITION. IF
 CONSTRUCTIBILITY OR CONDITION REQUIRES
 REPLACEMENT, CONDUCTOR SIZES SHALL BE
 VERIFIED AND MAINTAINED.

CONSTRUCTION SET

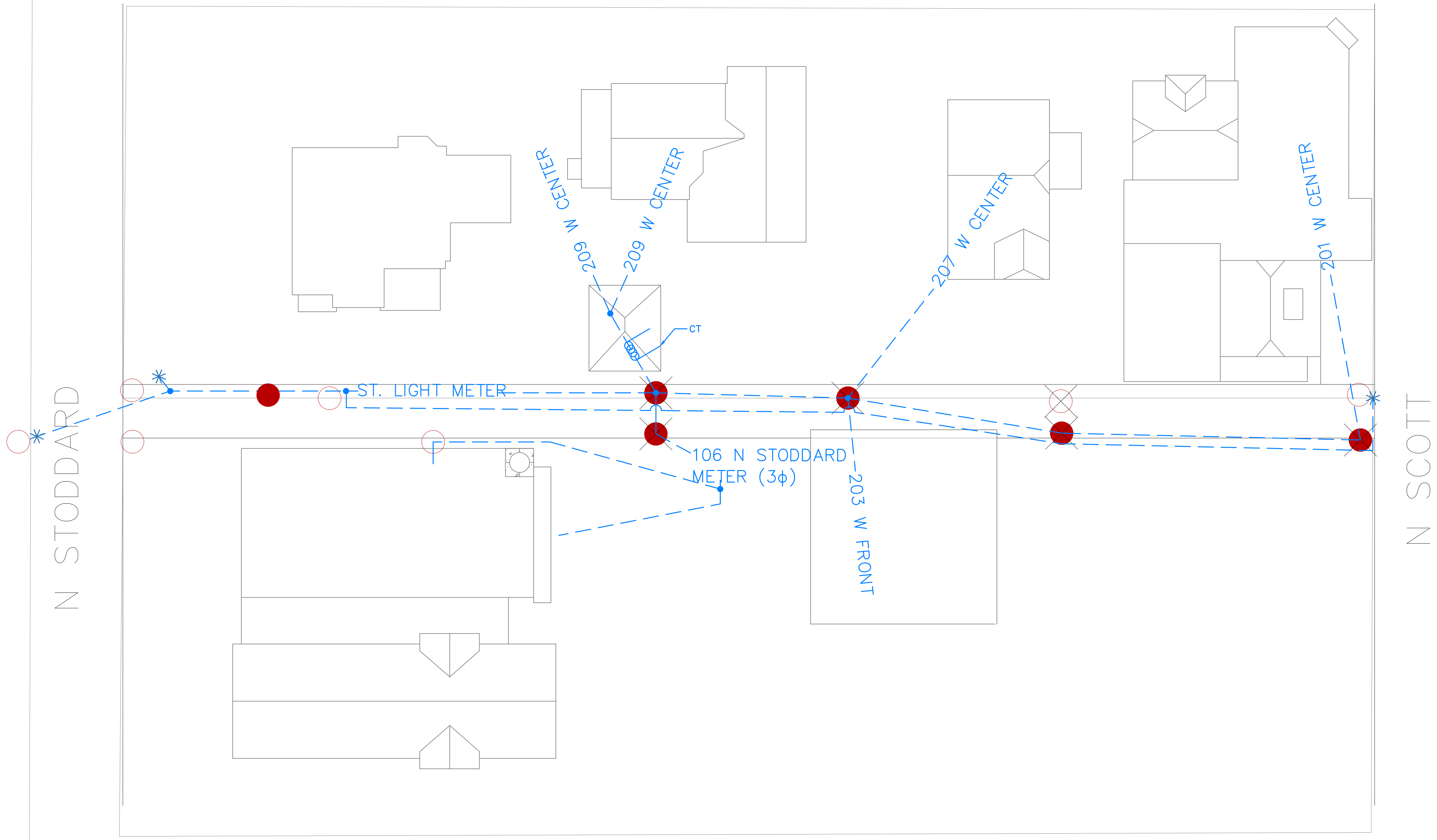
REVISIONS			
#	DATE	BY	DESCRIPTION



CUSTOMER CITY OF SKESTON	DESIGNED BY: RV	JOB NO.
PROJ. NAME ALLEY REBUILD	DRAWN BY: RV	SPEC REF.
DRAWING NAME SECONDARY ONE LINE	APPROVED BY: **	SCALE: NA
	DATE: 1/18/24	DRAWING NO. E.8
		SHEET # 8 of 9



W CENTER



N STODDARD

N SCOTT

E FRONT

NOTE:
 SECONDARY COLORS CODED TO CORRESPOND TO THEIR RESPECTIVE TRANSFORMERS.
 SECONDARY AND SERVICE DROP CONDUCTORS SHALL BE FIELD VERIFIED FOR CONDITION. IF CONSTRUCTIBILITY OR CONDITION REQUIRES REPLACEMENT, CONDUCTOR SIZES SHALL BE VERIFIED AND MAINTAINED.

CONSTRUCTION SET

REVISIONS			
#	DATE	BY	DESCRIPTION

UTILITRA

UTILITRA
 200 LAKEFRONT PKWY
 EDWARDSVILLE, ILLINOIS
 1-618-797-9001

CUSTOMER CITY OF SKESTON	DESIGNED BY: RV	JOB NO.
PROJ. NAME ALLEY REBUILD	DRAWN BY: RV	SPEC REF.
DRAWING NAME SECONDARY ONE LINE	APPROVED BY: **	SCALE: NA
	DATE: 1/18/24	DRAWING NO. E.9
		SHEET # 9 of 9